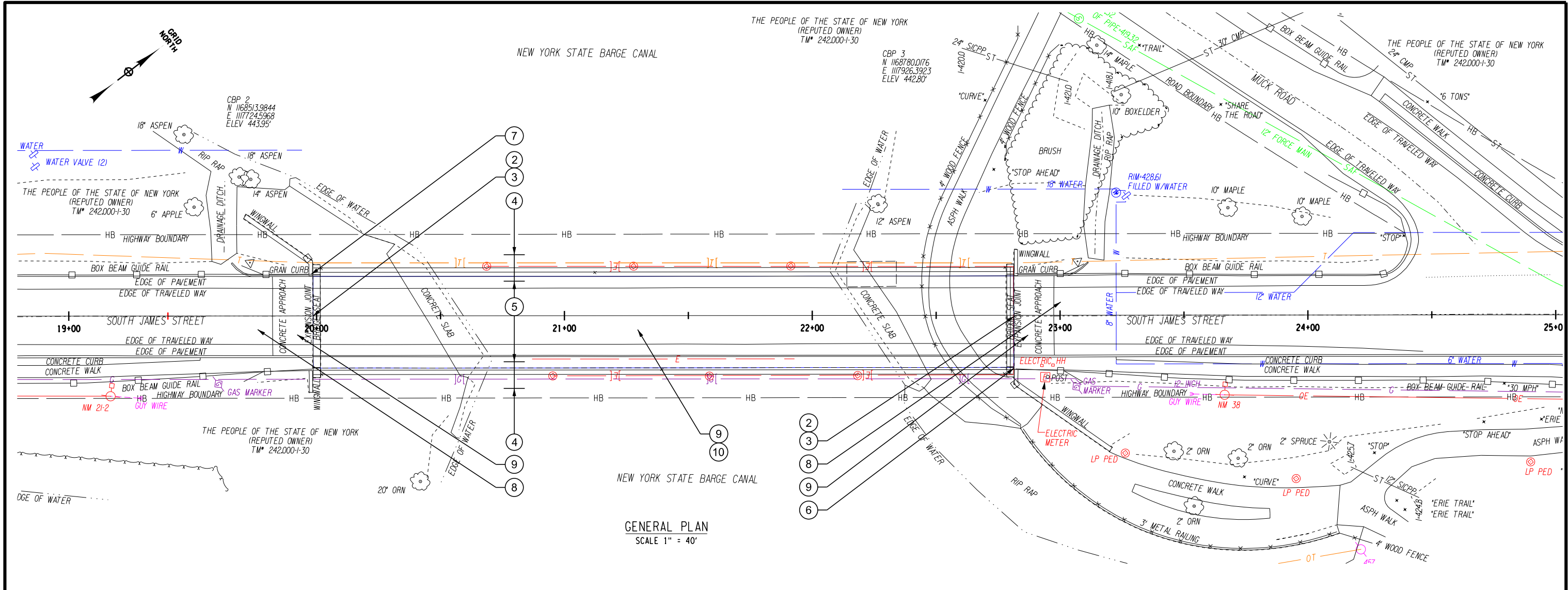
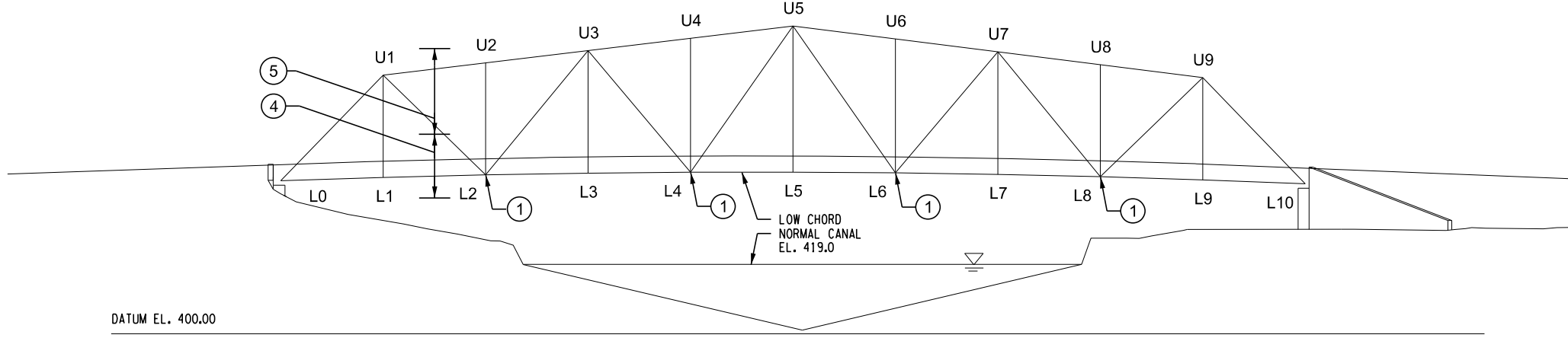


FILE NAME = B:\GLOBAL\Projects\Bome, City of\233720 - S James St Bridge over Erie Barge Canal\Drawings\Structural\206450\_Fea\_brd.dgn  
 DATE = 6/18/2024  
 TIME = 1:33:53 PM

PROJECT MANAGER  
 CHECK  
 DRAFTING  
 CHECK  
 DESIGN  
 JOB MANAGER  
 DESIGN SUPERVISOR



GENERAL PLAN  
 SCALE 1" = 40'



ELEVATION  
 SCALE 1" = 40'

LEGEND

# WORK ITEM

DESCRIPTION OF WORK

- 1 - REPLACE EXISTING STEEL BOLTS AND SEAL CHORD SPLICE GAP
- 2 - REPLACE EXISTING ARMORED JOINT WITH ARMORLESS JOINT
- 3 - REPAIR EXISTING APPROACH SLAB AND APPROACH SIDEWALK AS NEEDED
- 4 - STRUCTURAL STEEL PAINTING FIELD APPLIED, TOTAL REMOVAL
- 5 - STRUCTURAL STEEL PAINTING FIELD APPLIED, OVERCOAT
- 6 - REPAIR BRIDGE PARAPET END
- 7 - REPAIR TRANSITION RAIL
- 8 - MILL AND RESURFACE APPROACHES
- 9 - DIAMOND GRIND AND LONGITUDINALLY SAWCUT GROOVE DECK AND APPROACH SLABS
- 10 - SEAL EXISTING CONCRETE SURFACES ON BRIDGE

AFFIX SEAL: ON:	ALTERED BY: ON:

AS-BUILT REVISIONS DESCRIPTION OF ALTERATIONS:	BRIDGE REHABILITATION	PIN 2754.71	BRIDGES	CULVERTS	ALL DIMENSIONS IN ft UNLESS OTHERWISE NOTED	CONTRACT NUMBER ---	
	SOUTH JAMES STREET OVER ERIE BARGE CANAL		4206450				
	CITY OF ROME						
COUNTY: MADISON	REGION: 2				GENERAL PLAN	DRAWING NO. PLN-1 SHEET NO. 1	
IT IS A VIOLATION OF LAW FOR ANY PERSON, UNLESS THEY ARE ACTING UNDER THE DIRECTION OF A LICENSED PROFESSIONAL ENGINEER, ARCHITECT, LANDSCAPE ARCHITECT, OR LAND SURVEYOR, TO ALTER AN ITEM IN ANY WAY. IF AN ITEM BEARING THE STAMP OF A LICENSED PROFESSIONAL IS ALTERED, THE ALTERING ENGINEER, ARCHITECT, LANDSCAPE ARCHITECT, OR LAND SURVEYOR SHALL STAMP THE DOCUMENT AND INCLUDE THE NOTATION "ALTERED BY" FOLLOWED BY THEIR SIGNATURE, THE DATE OF SUCH ALTERATION, AND A SPECIFIC DESCRIPTION OF THE ALTERATION.						 LaBella Powered by partnership.	 NEW YORK STATE OF OPPORTUNITY Department of Transportation

FILE NAME = B:\GLOBAL\Projects\Rome, Cty of\2233720 - S James St Bridge over Erie Barge Canal\06\_Drawings\Structural\206450\_Fea\_brd.dgn  
 DATE = 6/18/2024  
 TIME = 1:33:55 PM

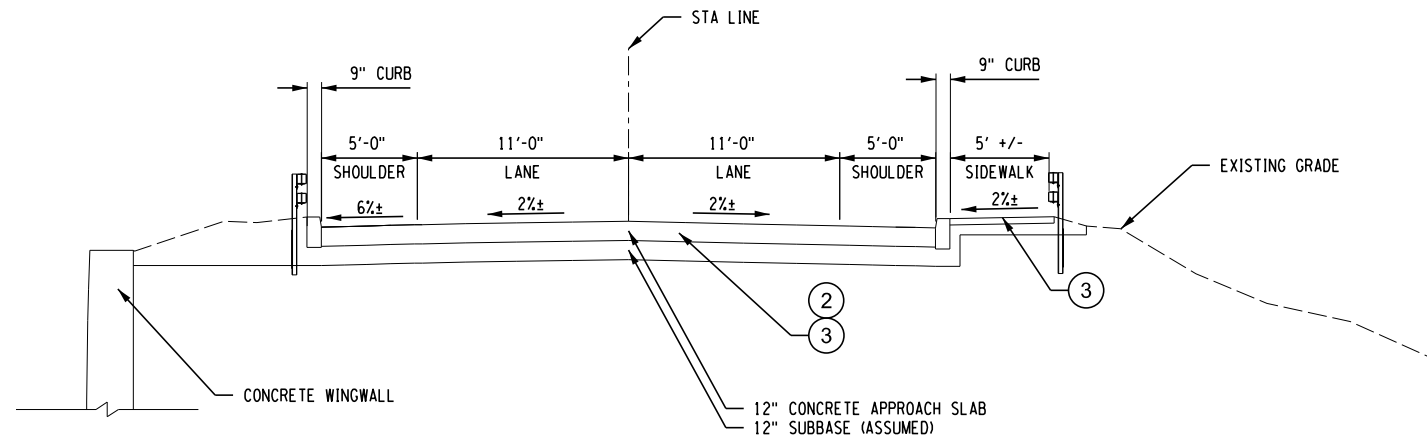
PROJECT MANAGER  
 CHECK  
 DRAFTING  
 CHECK  
 DESIGN  
 JOB MANAGER  
 DESIGN SUPERVISOR

**LEGEND**

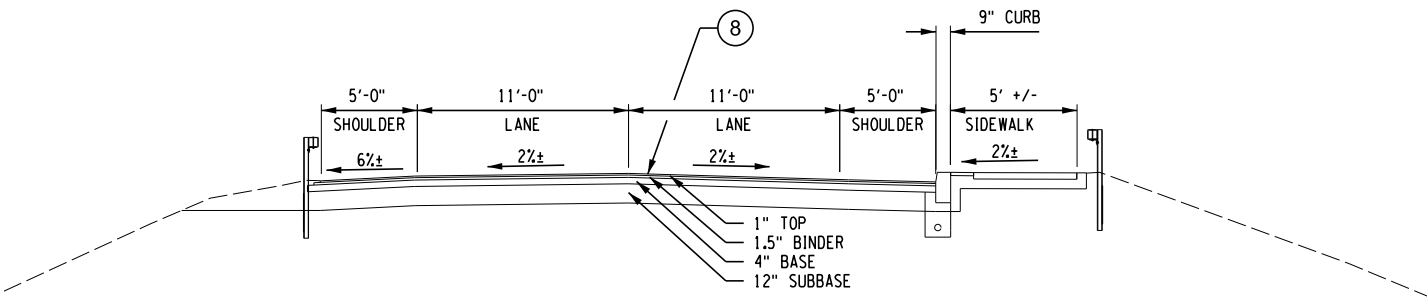
# WORK ITEM

**DESCRIPTION OF WORK**

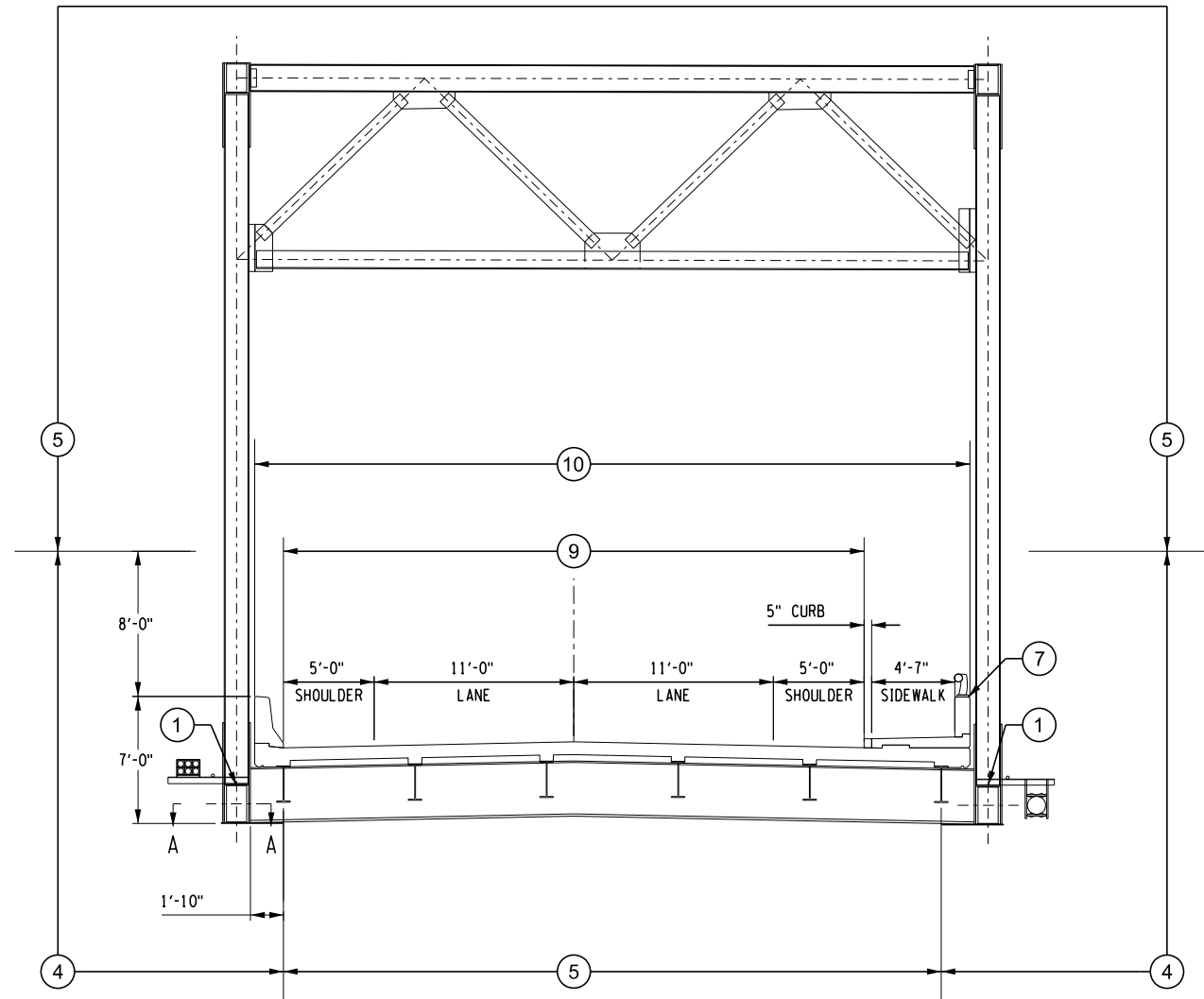
- 1 - REPLACE EXISTING STEEL BOLTS AND SEAL CHORD SPLICE GAP
- 2 - REPLACE EXISTING ARMORED JOINT WITH ARMORLESS JOINT
- 3 - REPAIR EXISTING APPROACH SLAB AND APPROACH SIDEWALK AS NEEDED
- 4 - STRUCTURAL STEEL PAINTING FIELD APPLIED, TOTAL REMOVAL
- 5 - STRUCTURAL STEEL PAINTING FIELD APPLIED, OVERCOAT
- 6 - INSTALL (2) HANDHOLES AT EACH SPLICE LOCATION FOR ACCESS
- 7 - REPAIR BRIDGE PARAPET END
- 8 - MILL AND RESURFACE APPROACHES
- 9 - DIAMOND GRIND AND LONGITUDINALLY SAWCUT GROOVE DECK AND APPROACH SLABS
- 10 - SEAL EXISTING CONCRETE SURFACES ON BRIDGE



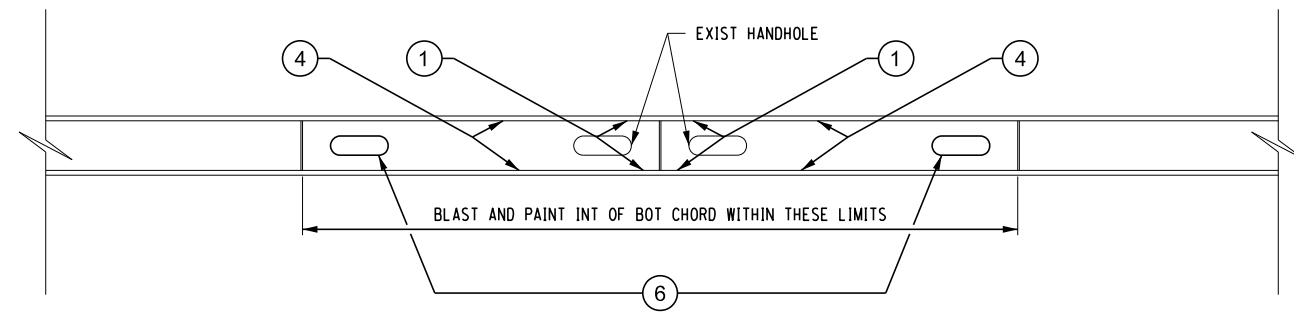
TYPICAL EXISTING APPROACH SECTION  
 SCALE 1" = 20'



TYPICAL EXISTING HIGHWAY SECTION  
 SCALE 1" = 20'



TYPICAL EXISTING BRIDGE SECTION  
 SCALE 1" = 20'



SECTION A-A AT L2, L4, L6, L8  
 SCALE N.T.S.

AFFIX SEAL: ON:	ALTERED BY: ON:
AS-BUILT REVISIONS DESCRIPTION OF ALTERATIONS:	

BRIDGE REHABILITATION SOUTH JAMES STREET OVER ERIE BARGE CANAL	PIN 2754.71	BRIDGES 4206450	CULVERTS	ALL DIMENSIONS IN FT UNLESS OTHERWISE NOTED	CONTRACT NUMBER ---
CITY OF ROME	REGION: 2	TYPICAL SECTIONS			DRAWING NO. TYP-1
COUNTY: MADISON					SHEET NO. 2
IT IS A VIOLATION OF LAW FOR ANY PERSON, UNLESS THEY ARE ACTING UNDER THE DIRECTION OF A LICENSED PROFESSIONAL ENGINEER, ARCHITECT, LANDSCAPE ARCHITECT, OR LAND SURVEYOR, TO ALTER AN ITEM IN ANY WAY. IF AN ITEM BEARING THE STAMP OF A LICENSED PROFESSIONAL IS ALTERED, THE ALTERING ENGINEER, ARCHITECT, LANDSCAPE ARCHITECT, OR LAND SURVEYOR SHALL STAMP THE DOCUMENT AND INCLUDE THE NOTATION "ALTERED BY" FOLLOWED BY THEIR SIGNATURE, THE DATE OF SUCH ALTERATION, AND A SPECIFIC DESCRIPTION OF THE ALTERATION.				 Powered by partnership.	 Department of Transportation